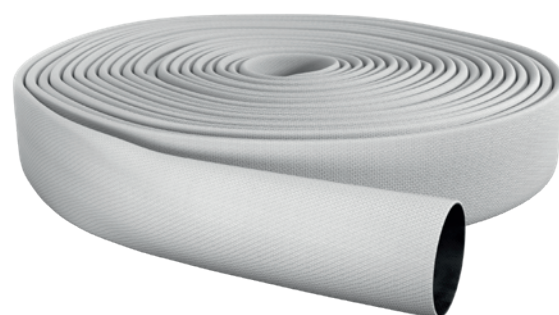


# ESCHBACH SPECIAL 400



## Multipurpose lay flat hose

Special lightweight construction for multipurpose water delivery operations. Circular woven jacket out of 100% high tenacity synthetic yarn. Inner liner made out of a vulcanized high quality EPDM compound.

### ADVANTAGES

- Easy handling due to lightweight construction
- High aging resistance
- Low friction loss
- Good resistance to abrasion
- Cold-resistant up to -40°C
- Heat-resistant up to +100°C
- Easy maintenance and handling

### SERVICE

- Coating in plain and relief version available
- Individual marking available
- Binding with international couplings available on request
- Other diameters on request
- Available in lengths up to 1000 m depending on diameter

Diameter Inch (mm)	Weight g/m	Burst pressure bar	Working pressure bar
1" (25)	125	50	14
1 ¼" (32)	160	50	14
1 ½" (38)	190	50	14
1 ¾" (45)	240	50	14
2" (52)	290	50	14
2 ½" (65)	340	50	14
2 ¾" (70)	365	50	14
3" (75)	460	50	14
3 ½" (90)	495	35	12
4" (102)	640	35	12
4 1/3" (110)	715	35	12
5" (127)	870	30	10
6" (152)	980	30	10
8" (203)	1390	24	10

Remark maximum working pressure:

The mentioned data is valid for the hose only. In case of fitted couplings the working pressure depends on the respective defined nominal pressure of the used coupling and the method of fitting.